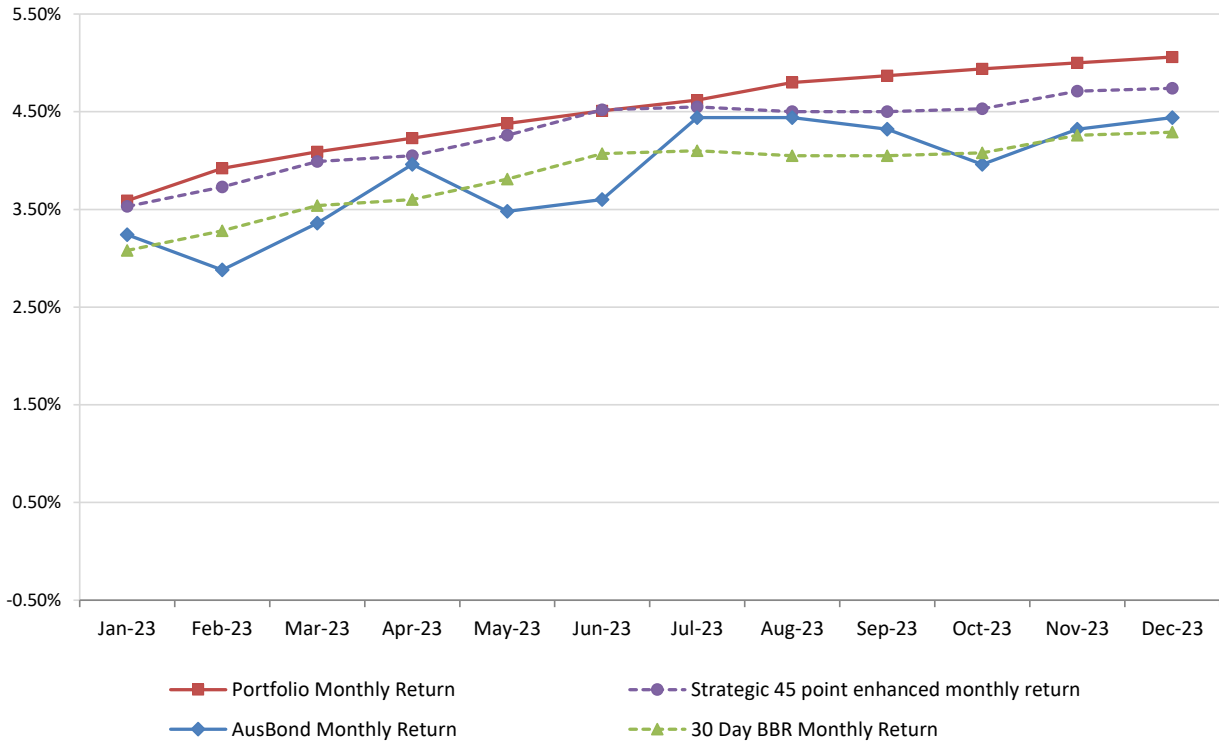


Attachment B

**Investment Performance
as at 31 December 2023**

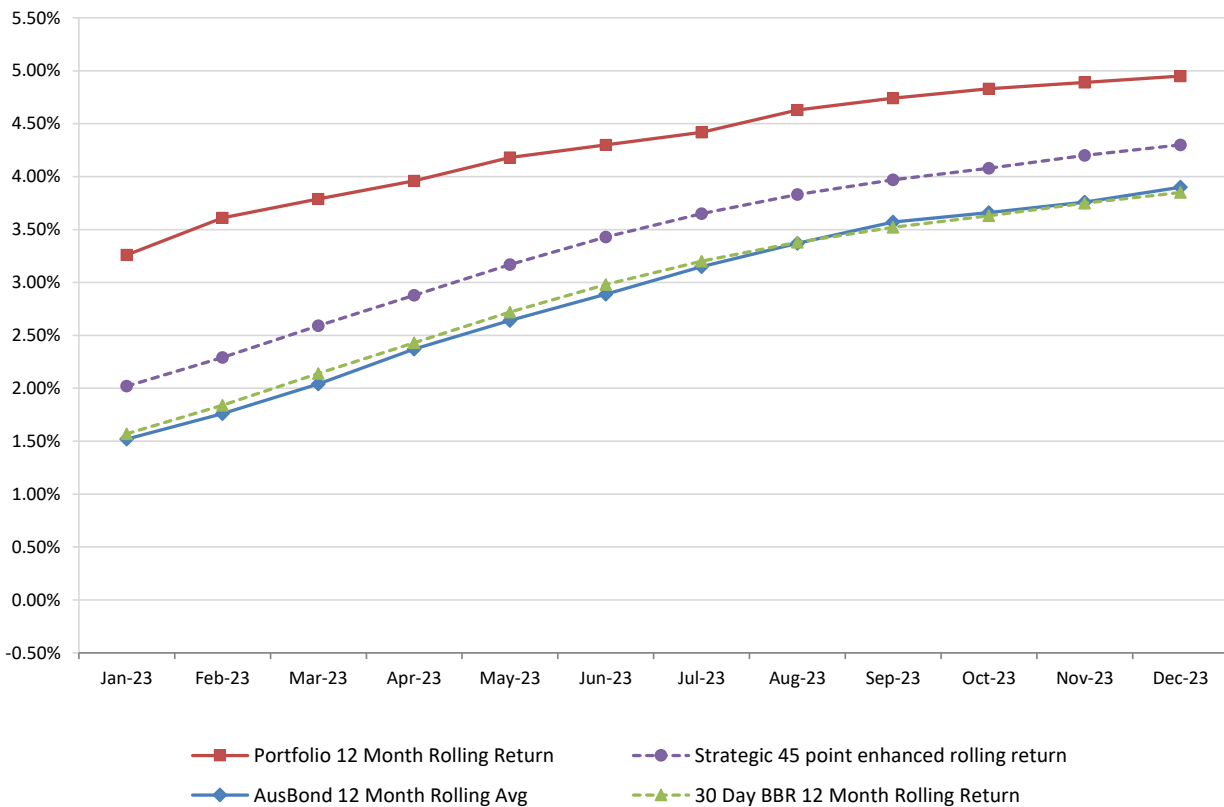
Monthly Results

Actual Portfolio vs Strategic Enhanced Benchmark vs AusBond Benchmark vs 30 Day BBR Benchmark
December 2023

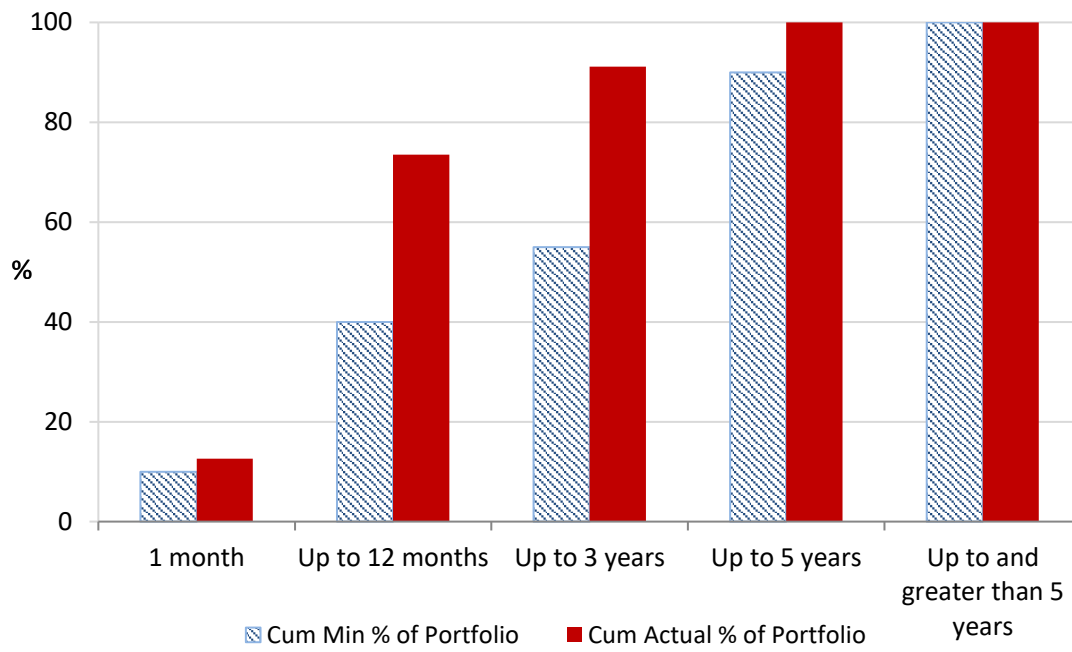


12 Month Rolling Averages

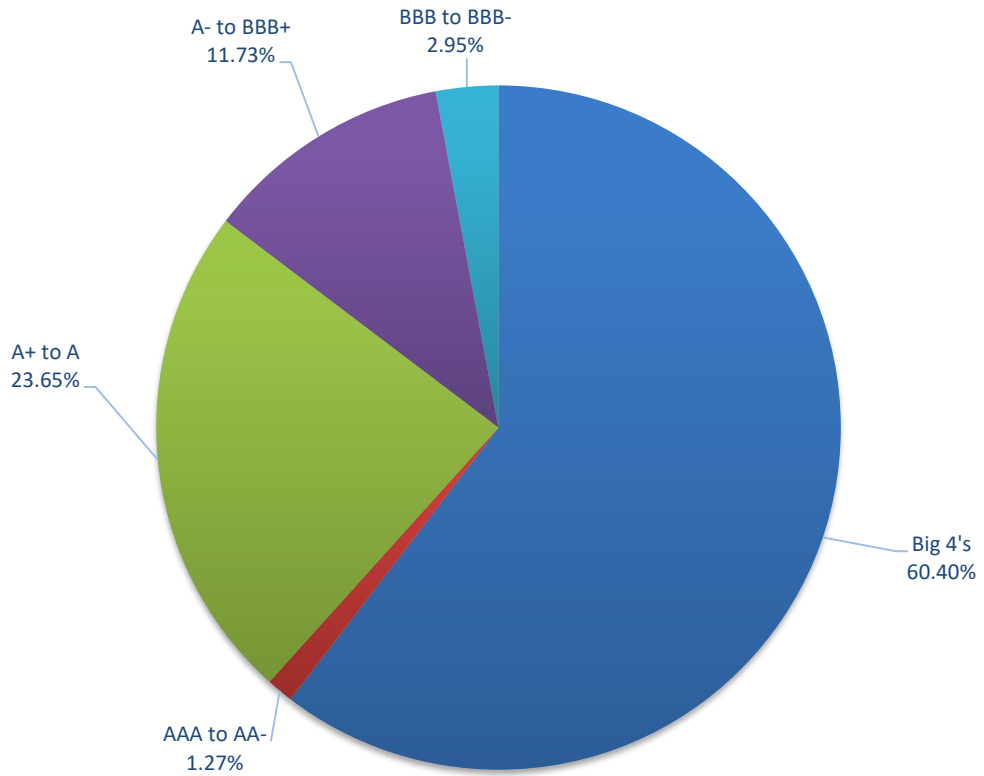
Actual Portfolio vs Strategic Enhanced Benchmark vs AusBond Benchmark vs 30 Day BBR Benchmark
December 2023



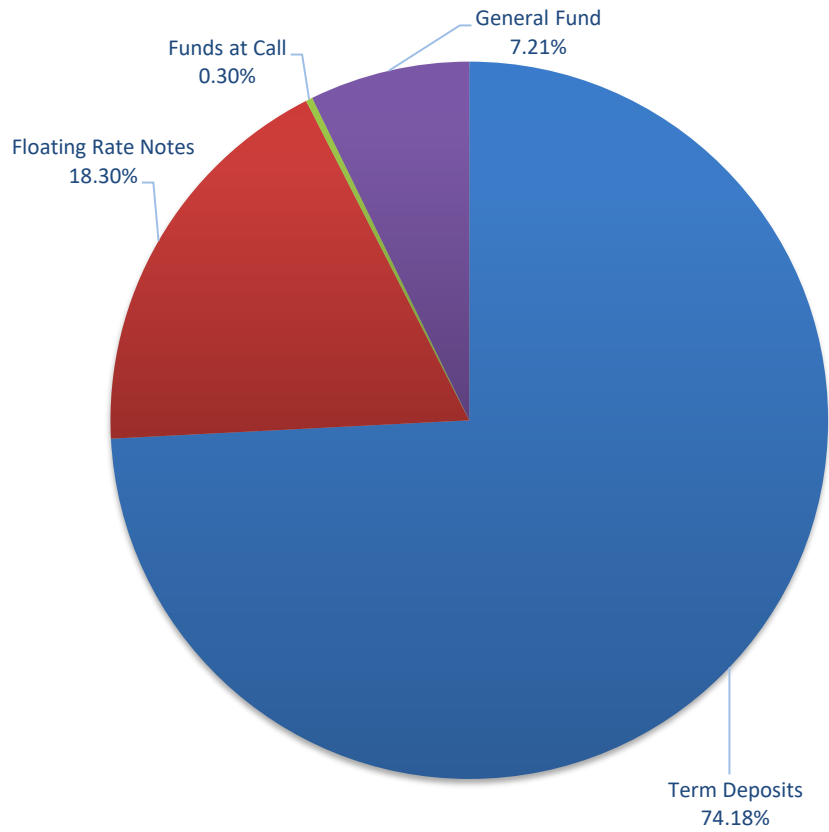
Portfolio Liquidity - Minimum Allocations as at 31 December 2023



Risk Profile as at 31 December 2023



Risk Profile as at 31 December 2023



INVESTMENT AND CASH DISTRIBUTION BY FINANCIAL INSTITUTION				
as at 31 December 2023				
Institution Category	Financial Institution	Amount \$M	Financial Inst. %	Institution Cat. %
Australian Big 4 Bank (and related institutions)	ANZ Bank	19.5	2.5	
	Commonwealth Bank	153.7	19.5	
	National Australia Bank	79.4	10.1	
	Westpac Banking Corporation	223.8	28.4	
Big 4 Total		476.3		60.4
Other Australian ADIs and Australian subsidiaries of foreign institutions	Bank Australia Limited	9.5	1.2	
	Bank of Queensland	23.0	2.9	
	Bendigo & Adelaide Bank	69.5	8.8	
	Great Southern Bank (formerly Credit Union Australia)	6.5	0.8	
	ING Bank	95.0	12.0	
	Suncorp Bank	77.5	9.8	
	Macquarie Bank Ltd	14.0	1.8	
	Northern Territory Treasury Corporation	10.0	1.3	
Newcastle Permanent Building Society	7.3	0.9		
Other ADI Total		312.3		39.6
Grand Total		788.6	100.0	100.0